

8800 TIRE CHANGER OPERATING INSTRUCTIONS

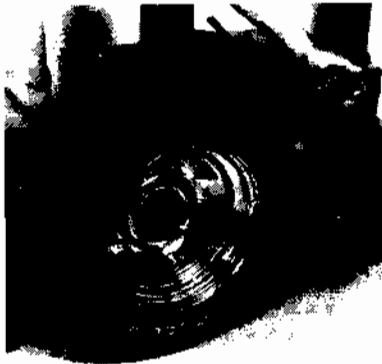
WARNING

A BURST OF AIR IS RELEASED WHEN THE LEFT FOOT PEDAL IS DEPRESSED ALL THE WAY.

WARNING

THE BACKING PLATE WILL ROTATE WHEN THE RIGHT FOOT PEDAL IS PRESSED.

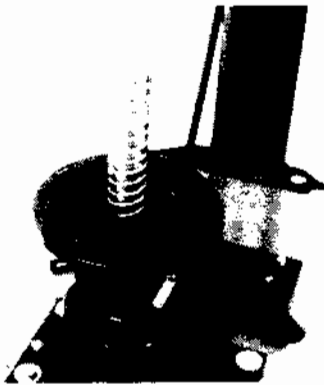
To Demount tire from Rim



Release air pressure in tire and remove valve stem.

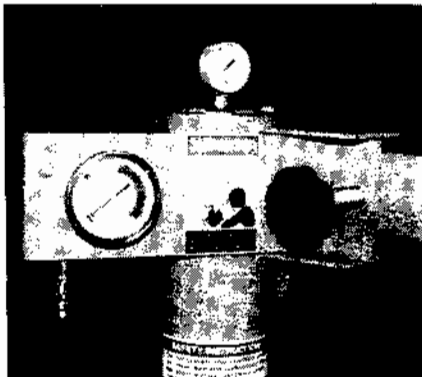
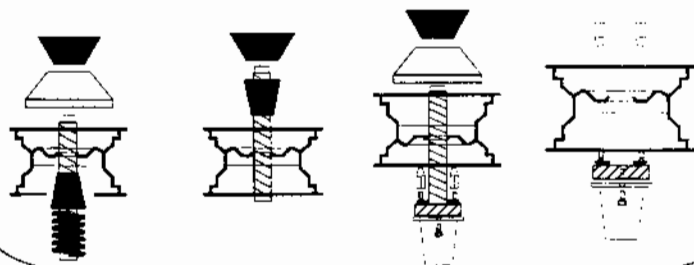
Place tire/wheel assembly between changer and bead breaker shoe as illustrated in photo.

Position bead breaker shoe about 1/2" behind rim and press down on right foot pedal. Release when bead is broken. **Coat both beads generously with tire lube.**



Place tire / wheel assembly on top of backing plate (outside facing up) and turn until a lug hole engages with the locator pin. Thread hold-down cone over center shaft and tighten against center hole of rim.

MOUNTING OTHER THAN STEEL RIMS



Swing the mount/demount arm into position and adjust the knob at the rear of the arm so the mount/demount head is lined up just outside of the rim edge when the spring loaded shaft is pushed down against the tire.

-- CONTINUED ON FLIP SIDE--

8800 TIRE CHANGER OPERATING INSTRUCTIONS

WARNING

A BURST OF AIR IS RELEASED WHEN THE LEFT FOOT PEDAL IS DEPRESSED ALL THE WAY.

WARNING

THE BACKING PLATE WILL ROTATE WHEN THE RIGHT FOOT PEDAL IS PRESSED.

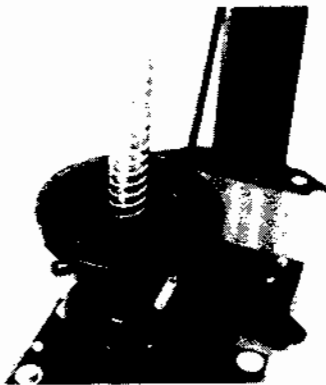
To Demount tire from Rim



Release air pressure in tire and remove valve stem.

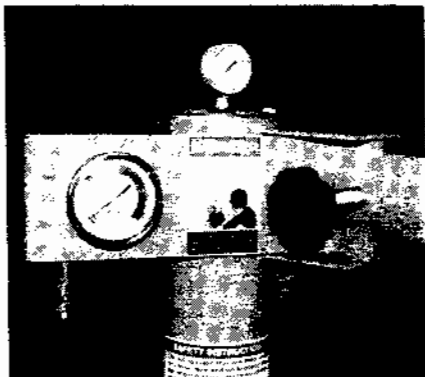
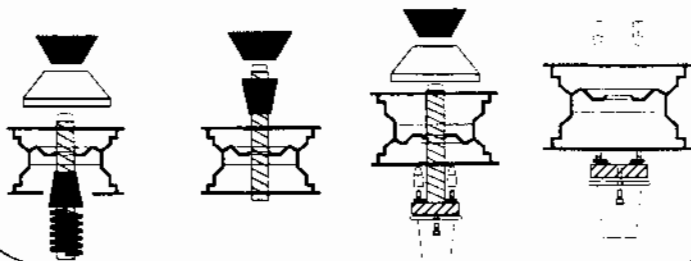
Place tire/wheel assembly between changer and bead breaker shoe as illustrated in photo.

Position bead breaker shoe about 1/2" behind rim and press down on right foot pedal. Release when bead is broken. **Coat both beads generously with tire lube.**



Place tire / wheel assembly on top of backing plate (outside facing up) and turn until a lug hole engages with the locator pin. Thread hold-down cone over center shaft and tighten against center hole of rim.

MOUNTING OTHER THAN STEEL RIMS



Swing the mount/demount arm into position and adjust the knob at the rear of the arm so the mount/demount head is lined up just outside of the rim edge when the spring loaded shaft is pushed down against the tire.

-- CONTINUED ON FLIP SIDE--